

Bridge Inspection

KS Engineers, P.C.



20 Years of
Excellence
KSE

Bridge Inspection

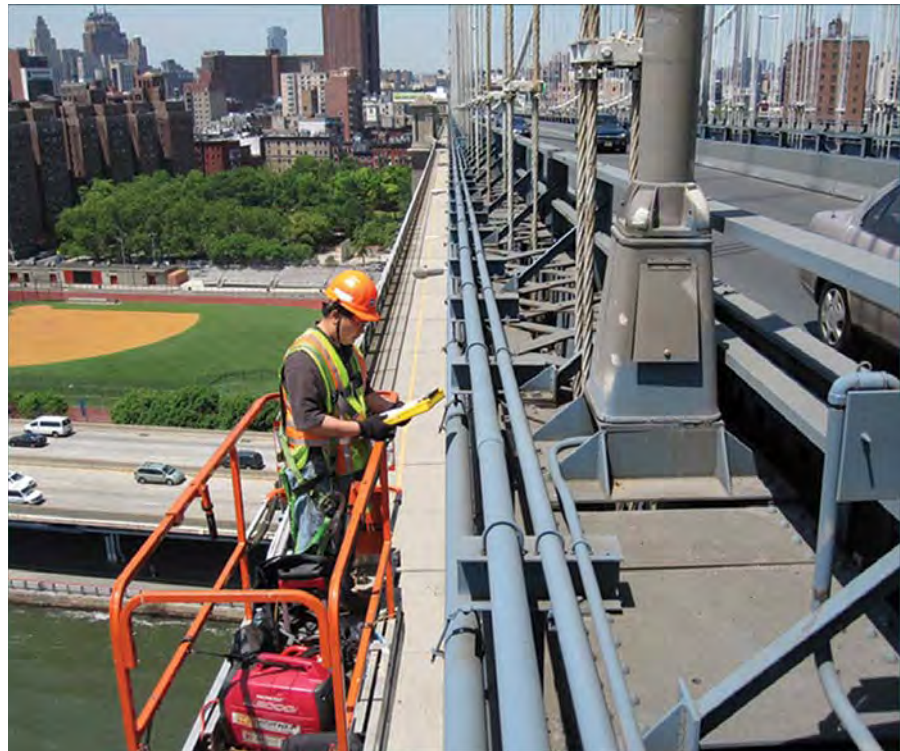
While our infrastructure matures at a rapid pace, many of our rural and urban bridges, viaducts and culverts are in need of significant repair or replacement. **KSE** is performing much needed condition surveys, NBIS, biennial and structural integrity inspections, load rating, fatigue and scour analyses. In addition, we have developed computerized bridge information systems to extend the lives of these valuable assets. Our engineers excel in what they do, and **KSE** provides them with the necessary tools and training to make their challenging work exciting and rewarding.

In order to save our clients valuable time and money, we constantly adapt to new technologies. Our field professionals use the latest in tablet PCs to produce more efficient, accurate and consistent inspection field notes; and use wireless broadband Internet access to stay in touch with clients and the main office.

Our services have ranged from the provision of team leaders and full inspection teams to complete project management on minor and major bridges, viaducts, elevated structures, culverts and sign structures. **KSE** has strong credentials as both a prime and subconsultant on infrastructure inspection projects in this challenging region.



Biennial Bridge Inspection & Design of Miscellaneous Structural Repairs at the Robert F. Kennedy Bridge [TBTA]



Biennial & Interim Inspection of the Manhattan Bridge [NYSDOT]



Biennial & Interim Inspection of the Queensboro Bridge [NYSDOT]



KS Engineers, P.C.



In-Depth Inspection & Deck Condition Assessment of the Walt Whitman Bridge Suspension & Anchorage Spans [DRPA]



In-depth Inspection, Structural Load Rating & Underwater Inspection for 52 Undergrade Bridges [NJ TRANSIT]



NBIS Inspection of Delaware River Memorial Bridges [DRBA]



NBIS Inspection of 42 State Bridges [NJDOT]



FCM Inspection of Garden State Parkway Bridges over Rt. 166 [NJTA]



Underwater Inspection of the Western Region Bridges [NYS DOT]





Engineers · Surveyors · Construction Managers

With full-service offices in New Jersey, New York and Pennsylvania, **KSE** is a highly qualified professional engineering firm that provides engineering solutions through design and studies; asset management; construction management and inspection; landscape architecture; land surveying; and GIS mapping.

Bridge Inspection Services

- NBIS Biennial Inspection
- In-Depth Inspection
- Underwater Inspection
- Fathometer Survey
- Scour Analysis
- Bridge Deck Evaluation
- Bridge Management System
- GIS-Based Asset Management System
- Structural Analysis & Load Rating
- Non-Destructive Testing
- Emergency Repairs Design
- Construction Inspection
- Construction Management

New Jersey · New York · Pennsylvania

Corporate Headquarters

494 Broad Street, 4th Floor
Newark, NJ 07102

T: 973 . 623 . 2999 • F: 973 . 242 . 2955
info@kseng.com • www.kseng.com



*Inspection of 127 Overhead & Cantilever Sign Structures
[NJDOT]*



*Biennial & Interim Inspection of 900 Region 2 Bridges
[NYSDOT]*



*In-Depth Inspection of Fixed & Movable Bridges
[NJ TRANSIT]*